

# *Music in the Park*

**May 12th 2013**

**noon to 9pm**

**Elms Park Thame**

Presented by

**Friends of Elms Park**

Park Street, Thame



**musicinthepark.org.uk**

# The Rectory Collection



## **White Hart Croft Haddenham**

A development of just 5 three and four bedroom detached homes in quiet tucked away location. From £525,000 to £795,000. Available now.

## **St Nicholas Mews Old Marston Oxford**

Situated in the heart of the Conservation area in the Village within the City, just 5 new homes and conversion of original pub. **All Sold**

## **Severalls Farm Shillingford Oxfordshire**

4 stunning barn conversions in glorious rural location offering outstanding accommodation. Just 3 remaining. From £1.395 to £1.85m. Available Now.

## **The Swan Tetworth**

Starting soon. 4 new outstanding detached homes in generous plots set behind the Historic Swan. Available for occupation from Spring 2014.

## **Church Lane Old Marston Oxford**

Set within the heart of the village yet within the ring road of Oxford, only 3, four bedroom detached houses offering generous family accommodation.

Available for occupation from early 2014.

## **Eynsham Gardens Oxford**

A development of 3 terraced houses and 3 detached houses in tucked away cul de sac location. Available for occupation from early 2014.

## **Hill View Upper Basildon Pangbourne**

Two outstanding family homes set in the hilltop village of Upper Basildon offering stunning family accommodation and far reaching views. Available for occupation from Summer 2014.



## WELCOME TO 'MUSIC IN THE PARK' 2013

This is the third year for Music in the Park and monies raised over the last two years have helped to fund lights for Elms Park. The previous two years have exceeded all our expectations in terms of visitor numbers, enjoyment, monies raised and even the weather.

In year one, the event saw more than 1,800 people attend the event and last year in excess of 3,500 people came to listen to a wide selection of music.

Friends of Elms Park was started in 2006 by a few residents of Thame from Park Street, Lea Park and longer term saw members from all areas of Thame. One resident who was involved initially was Leonard Purser's great granddaughter, who lived at the Elms and has supported the event along with two other generations of her family.

Friends of Elms Park is dedicated to improving facilities for all members of the community and events such as this help to raise funds in order to do this, and your suggestions are important to us.

Over the last couple of years, membership of the group has declined and we are looking for new members to join FOEP and also volunteers to help at 'Music in the Park'. If you wish to be involved in either, then please visit the operations caravan near the front entrance and either complete one of our forms or leave your contact details with one of our volunteers.

I would especially like to thank all the sponsors, helpers and those who continue to support this event and the following for their time, effort and endless energy in making this a great event enjoyed by all ages.

Cassie Pinnells	Steve Gunn	Alan Haigh	Hilary Dollman
Michele Pethers	Sarah Vickers	Chris Fram	Richard Walker
John Willscroft	Helen Stewart	Nigel Champken-Woods	

Alison Champken Woods, Chairman Friends of Elms Park

# Elms Park

## THE LAMENT OF THE NESTING ROOK

Written when Dutch Elm Disease struck Elms Park by Thame's celebrated poet Eric Gladwin.



*The land now known as Elms Park was originally part of the grounds of The Elms house which was purchased by Leonard Purser in 1928. They wished to provide a place for the town where the children could play in safety. The Park was officially opened to the public by Hedley Purser (Leonard's son) on 9th June 1951 at a 'Grand Fete' as part of Thame's Festival of Britain celebrations.*

*For more information about the history of the park and to join Friends of Elms Park visit the Friends of Elms Park Operations Caravan by the main entrance.*

I've searched for boughs for nesting  
I've looked my very best.  
But where's a bird to go to  
When there's not an elm tree left?

I've built two twig foundations.  
I've got this bit of string.  
But I need a BRANCH to set in,  
Not a useless masty thing.

Grandpa says WE'RE the reason.  
WE'VE not ate up the grubs.  
Before our generations came,  
The Rook was hard and tough!

We settled on a ferry,  
But the seagulls plucked my tail.  
We tried refinery chimneys,  
But the gasses made us pale!

AH ---- HH ---- RR

This thing is called a "steeple",  
And the cross is bare and hard!  
Should we try to grab his square nest  
Off that fat fool in the yard???





# THAME CARNIVAL

SATURDAY  
15<sup>TH</sup> JUNE 2013

THEME-MUSICALS

Parade through the  
Town Centre from noon

Fete 1pm - 5pm at  
Southern Road Recreation Ground

[thamecarnival2013@googlemail.com](mailto:thamecarnival2013@googlemail.com)

**AVEDA**  
THE ART AND SCIENCE OF PURE FLOWER AND PLANT ESSENCES

**brothers**  
dedicated positive inspired

**grow**

2  
AM  
BLUE

Thame's very own  
acoustic open mic. night -  
showcasing the incredible local talent

# THE FIRST THURSDAY MUSIC CLUB

the first thursday of every month

## acoustic open mic. night

**FREE ADMISSION**

Location: **The Stables** (behind the James Figg)

**7.45pm** SIGN  
UP

**8.15pm** START



[www.firstthursdaymusicclub.com](http://www.firstthursdaymusicclub.com)





CLOGAU®  
GOLD OF ROYALTY



KISMET JEWELLERS

18 Buttermarket, Thame, Oxon OX9 3EP • 01844 261166  
• [info@kismetjewellers.com](mailto:info@kismetjewellers.com) • [www.kismetjewellers.com](http://www.kismetjewellers.com)

# MAP

**MUGA  
Sports  
area**

  
**Jubilee cafe**

  
**The  
Crash  
Stage**

  
**Creative Kids  
Activities  
12-4pm**

  
**Toilets**

  
**Mix 96  
Mega Slide  
& Bungee Run**

**ENTRANCE  
& EXIT**



**Dome  
Stage**

**Playground**





**Bars**



**Food stalls**



**shopping &  
trade stands**

**PARK STREET**

**ENTRANCE  
& EXIT**



**K&A  
Stage**



**first  
aid**

LOCATIONS MAY BE SUBJECT TO CHANGE

# What's on When...

## DOMESTAGE

12.00	Official festival opening
12.30	14Ten
13.20	The M.F.U.
14.20	Antix
15.20	Bootlegger
16.20	Little Bill's Big Band
17.20	Dung Beatles
18.20	Hats off to Led Zeppelin
19.20	Muttz Knuttz
20.15	Bolt from the Blue
21:00	Finish

PROGRAMME MAY BE SUBJECT TO CHANGE

## CRASH STAGE - MUSIC NEAR THE BEER STALLS

12.30	Dane Cobain	14:30	Emma Davidmann
13:00	Sam Hunn	15:00	Abbie Broom
13:30	Strings Attached	15:30	Sam Hoare
14:00	Purple	16:00	Evette Judge

## K&A STAGE

12.15	Official festival opening
13.00	Stagecoach Thame
14:00	John Hampden School Choir
15:00	Haddenham Ukelele Group
16:00	Raw Diva Dance Troupe Romy Louisa Dance Academy
17:00	Lost Minute
18:00	Joshua Gilbert Band
19:00	Sinfiction
20:00	Alvin the Ultimate Elvis
21:00	Finish

16:30	Charlotte Dollman	18:30	Ruddock & Friends
17:00	Oliver Coats	19:00	2am Blue
17:30	Peter Kosanovich	19:30	Tay O'lay
18:00	Albion Avenue		

## MUSIC IN THE PARK

- All practitioners are fully Qualified and Registered
- Recognised by leading insurance companies
- Award winning Clinic for Patient Care
- Appointments early to late and Saturdays
- Gift vouchers available for all treatments
- Same day appointments
- Online Booking for some Treatments

Our team of caring and experienced practitioners use their skills to help patients be the best they can.

Treatments include:

Chiropractic, Osteopathy, Physiotherapy, Pilates, Sports & Remedial Massage, Holistic Massage, Acupuncture

Counselling, Psychology, CBT, Psychotherapy, Hypnotherapy

Speech & Language Therapy, Dietetics and Nutrition, Nutritional Therapy

Aromatherapy, Ear Candling, Indian Head Massage, Reflexology, Reiki

Make sure you have the treatment that is right for you.  
Call and speak to a practitioner or visit our website.

**01844 213344**

[www.thepracticethame.co.uk](http://www.thepracticethame.co.uk)



Use #MITP13  
to share your Music  
in the Park tweets



MusicInThePark

## DOMESTAGE | 12:30 | FESTIVAL OPENING ACT



Fusing Hard Rock with Powerful Melodic vocals, 14Ten mix the different influences they each bring from grunge, metal, punk etc to create their own unique sound. The press say:

"It's Metal as it should be done"

"There's a real freshness and sense of Energy"

"Confident and charismatic stage presence"

"The band has found a fresh, distinctive direction that really works"

"Lead-singer Rachel's voice is certainly powerful. Boy, that woman's got lungs."

PROGRAMME MAY BE SUBJECT TO CHANGE

# Bolt from the Blue

DOMESTAGE | 20:15 | FESTIVAL HEADLINE ACT



Founded in 1990, Bolt from the Blue is an eight piece band that can always be relied upon to deliver a high energy show packed with soul and R & B classics.

The present line up is comprised of eight top quality musicians who all have impressive musical pedigrees and a wealth of

performing experience spanning several decades. The classic piano, guitar, drum and bass core of the band are augmented by a dynamic three piece horn section.

A headline band that ensures to get everyone up and rocking to some great songs.

Programme may be subject to change

**AVEDA**

the art and science of pure flower and plant essences

# brothers

dedicated positive inspired

PROUD SUPPORTERS OF MUSIC IN THE PARK

BROTHERS THAME

16 BUTTERMARKET  
OX9 3EP  
01844 217365

BROTHERS OXFORD

57 HIGH STREET  
OX1 4AS  
01865 250696

BROTHERS MARLOW

68 WEST STREET  
SL7 2BP  
01628 484717





## THE MFU

**DOMESTAGE | 13:20**  
**ROCK COVERS WITH AN EDGE**

A fortunate meeting of like minds, to bring to life the true majesty of pop songs 'thru the medium of of ROCK!

**Lets do this thing!!**

Use #MITP13  
to share your Music  
in the Park tweets



MusicInThePark

Share your pictures and  
stories from today with us on  
Facebook



MusicInTheParkThame



## ANTIX

**DOMESTAGE | 14:20**  
**RAP / FUNK / ROCK**

Solo international hip hop artist Antix, playing live with his full band. An incredible fusion of hip hop and live musicianship.

[www.globalantix.com](http://www.globalantix.com)

Expect world-class lyrics, amazing guitar solos, and unique melodies, played by some top musicians.





## BOOTLEGGER

**DOMESTAGE | 15:20**  
**CLASSIC ROCK**

Local classic rock band Bootlegger are guaranteed to bring you exciting and energetic good-time music featuring your favourite songs. Dance and sing along to classics from bands such as the Rolling Stones, Free, AC/DC and The Who!

If you need a band to liven up your event, contact Bootlegger:  
[facebook.com/BootleggerRock](https://facebook.com/BootleggerRock)

Bootlegger are: John on rhythm guitar and vocals, Steve on lead guitar, Keith on bass and Rob on drums.



## LITTLE BILL'S BIG BAND

**DOMESTAGE | 16:20 YOUNG**  
**THAME BAND, BLUES COVERS**

'Little Bill's Big Band' are an exciting 14 piece ensemble, the musicians are all students at Lord Williams's School in Thame. A driving rhythm section, plenty of guitars, brass and woodwind line up give this little big band a full and dynamic sound. Foot-tapping classic 'Blues Brothers' numbers sit alongside recent chart hits.

The band played in the Crash Stage last year and went down so well, they were promised a slot on the main stage this year.

**Programme may be subject to change**

Use #MITP13  
to share your Music  
in the Park tweets



MusicInThePark



## DUNG BEATLES

**DOMESTAGE | 17:20**  
**TRIBUTE ACT**

The Dung Beatles charity tribute band performs a wide variety of songs, from 'A Hard Day's Night' to 'Here Comes The Sun'. We love getting everyone listening up, singing along and dancing on down to this joyous music! Everyone loves the Beatles.

## HATS OFF TO LED ZEPPELIN

**DOMESTAGE | 18:20**  
**TRIBUTE BAND**

Bandwagon Productions & Warren Grant present 'Hats off to Led Zeppelin' - A stunning tribute to the greatest rock band ever! You'll feel like you've traveled back in time when you experience these four top class musicians recreating Led Zeppelin's magical concerts. As well as being the ONLY UK tribute act officially endorsed by Marshall amplifiers they are proud to be co-managed by Warren Grant, the son of legendary Led Zeppelin manager, Peter Grant, who said after seeing them live: 'You guys really did the band justice!'

[www.hatsofftiledzeppelin.co.uk](http://www.hatsofftiledzeppelin.co.uk)

Programme may be subject to change

# MUTTZ KNUTTZ

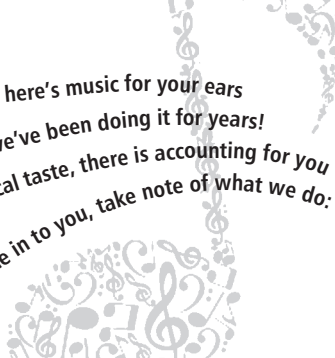
**DOME STAGE | 19:20 | PARTY BAND COVERS**



Muttz Knuttz are back for a third year by popular demand!

Honed from the granite summit of Mount Rockmore, four desperadoes with an arsenal of hits spanning four decades, the Ultimate Party Rock Cover Band. Sent on a mission from Diablo himself to shake the booty of the nation and have them all worshipping at the Church of noise! You will laugh, you will sing, you WILL Dance, you will ache and you won't tell your parents what time you will be home!

[www.themuttzknuttz.co.uk](http://www.themuttzknuttz.co.uk)



*If you own or run a Business, here's music for your ears  
At AS Howes we know the score; we've been doing it for years!  
Though there's no accounting for musical taste, there is accounting for you  
At AS Howes we'll tune in to you, take note of what we do:*

- **Annual Accounts**
- **Book Keeping**
- **Pay roll**
- **Business and Personal Tax**
- **Audit**

To AS Howes be instrumental in your business – give us a ring  
or e-mail to orchestrate a 'no obligation' session to discuss your needs.

TEL: 01869 252608

E-MAIL: [accountant@ashowes.co.uk](mailto:accountant@ashowes.co.uk)

**ashowes**



CHARTERED ACCOUNTANT • REGISTERED AUDITOR





## STAGECOACH THAME

**K&A STAGE | 13:00**  
**MUSICAL THEATRE**

Stagecoach Thame provide training in singing, dance and drama for children and young people aged 4-18 years. We hold our classes on Saturdays at The Phoenix Performing Arts Centre in Thame. Our Performance Troupe is made up from a selection of our main school students with our oldest member aged 17 and our youngest only 7! Our students love to perform at local events and we hope you enjoy our Broadway inspired piece!

Share your pictures and stories from today with us on Facebook



MusicInTheParkThame



## JOHN HAMPDEN SCHOOL CHOIR

**K&A STAGE | 14:00**  
**SCHOOL CHOIR**

John Hampden Choir loves to sing and where better to do so than in the Park next to our school. They have sung in Elms Park every year but today, as well as singing their regular favourites (with lots of opportunity for audience participation!) the children are very excited to be bringing you the first ever performance of 'Music in the Park' by local composer Barry Gibson. Enjoy!

**Programme may be subject to change**

Share your pictures and stories from today with us on Facebook



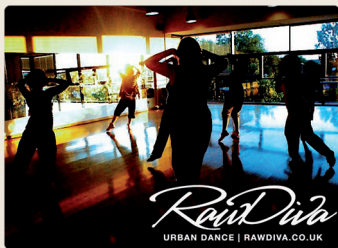
MusicInTheParkThame



## **HADDENHAM UKULELE GROUP**

**K&A STAGE | 15:00  
GROUP OF UKELELE PLAYERS**

Haddenham Ukulele Musos formed as a fortnightly session in May 2012 to play songs from the last 100 years on the ukulele. The Musos come from a range of walks of life and musical experiences. Many play other musical instruments but are drawn by the ability of the ukulele to make you smile. We hope the songs bring a smile to your face!



## **RAW DIVA DANCE TROUPE**

**K&A STAGE | 16:00  
DANCING ACT**

Raw Diva is an female urban dance group based in Oxford. They have been running since 2009 and provide commercial dance and hip hop classes to women in the local area. The classes are for everyone; you don't need any dance experience – it's all about having fun, embracing your femininity, building confidence and learning great routines to unleash your inner Diva!

[www.rawdiva.co.uk](http://www.rawdiva.co.uk)

**Programme may be subject to change**

## ROMY LOUISA DANCE ACADEMY

**K&A STAGE | 16:10**  
**DANCING ACT**

The Romy Louisa Dance Academy is based in Thame. We promote friendly professional dance training giving pupils the opportunity to develop self-confidence, poise, co-ordination and musicality in a fun, creative yet highly professional environment. The Academy has 100% pass rate for examinations. We have our very own triennial Academy show held, in professional local theatres. Most popular experiences to date was performing in Disneyland Paris 2011 and Her Majesty's Theatre, Haymarket London March 2013.



## LOST MINUTE

**K&A STAGE | 17:00**  
**ORIGINAL INDIE / ROCK**

Lost Minute has a commercial sound and appeal that is already proving very popular amongst their many fans.

With their catchy melodic hooks both vocally and musically, and sing-along choruses, this young band has a sound that is already getting them noticed throughout the music industry, as they continue to build their fanbase through heartfelt, and intensely personal songs.

[www.lostminute.co.uk](http://www.lostminute.co.uk)

# Joshua Gilbert

**K&A STAGE | 18:00**  
**ORIGINAL INDIE**

Use #MITP13

to share your Music  
in the Park tweets



MusicInThePark

Joshua Gilbert is a Thame-based singer and songwriter, who's sound has been compared to acts such as Dylan and Springsteen.

With a BBC Introducing slot coming up in the summer, come to the K&A Stage at 6pm to see what the hype is about







## SINFICTION

**K&A STAGE | 19:00**  
**ORIGINAL INDIE / POP**

SinFiction have been together for two years and define themselves as an indie rock band crafting lively, catchy songs with great melodies and choruses. Their eclectic musical tastes, which include classic rock, dance and heavy metal, deliver a natural flair for rhythm and melody. On stage, this combines with acoustic guitars, driving beats and soaring harmonic vocals to create a truly unique sound, resulting in the kind of catchy, memorable rock songs you think you've known all your life.

[www.sinfiction.co.uk](http://www.sinfiction.co.uk)

**Programme may be subject to change**



## ALVIN THE ULTIMATE ELVIS

**K&A STAGE | 20:00 | TRIBUTE**

Well known and highly respected Elvis Presley tribute artist and entertainer, London West End performer, as well as radio and national television celebrity Alvin Printwhistle, presents his ultimate Elvis tribute show.

With such strong emphasis on the 'fun' element and with the audience being encouraged to participate, the formula for a great night is certainly guaranteed. Alvin will have you Rockin' 'n' Rollin' the night away as we celebrate the continuing legacy that is ... Elvis Presley!

[www.alvinprintwhistle.co.uk](http://www.alvinprintwhistle.co.uk)



# Crash Stage

The crash stage is near the beer tent and is a great place to enjoy a wonderful and eclectic mix of acoustic music from some great solo artists, duos and acoustic bands, some of who would normally perform electric, but on this stage you can hear them do something a little different.

The stage will host both covers and original music, so come along and enjoy!



## Dane Cobain

12:30 | Singer / Songwriter

Independent singer/songwriter blending catchy melodies with heart felt lyrics in a catharsis of indie/folk acoustica. [www.danecobain.com](http://www.danecobain.com)

## Sam Hunn

13:00 | Singer / Guitar

15 yrs old he wowed the audience and this year he is back with his band The Bird & The Beast giving us indie, folky style, mellow and refreshing, mix of original and covers from the likes of Mumford & Sons

## Strings Attached

13:30 | Piano, cello, guitar, vocals

A great band featuring Cello, guitar, piano and vocals giving a unique slant on some well known covers [www.lemonrock.com/stringsattached](http://www.lemonrock.com/stringsattached)

# Crash Stage

Share your pictures and stories from today with us on Facebook



MusicInTheParkThame

## Purple

14:00 | Guitar / Female vocals

Local duo from Chinnor bringing you favourites from the likes of Adele, Emeli Sande, Fleetwood Mac and Fairground Attraction.

## Emma Davidmann 14:30 | Singer / Songwriter

Powerful and captivating singer/songwriter who has been playing since the age of 4. Originally from Thame but presently in Brighton studying at Brighton Institute of Modern Music.

## Abbie Broom

15:00 | Singer / Songwriter

Performing original alternative folk songs with a unique style and a great voice. Influences include Frank Turner and Young Rebel Set [www.facebook.com/abbiebroom95](http://www.facebook.com/abbiebroom95)

## Sam Hoare

15:30 | Singer / Songwriter

Young singer/songwriter whose music has been described as quirky, honest and imaginative, with a raw acoustic vibe. [www.soundcloud.com/samanthajaynehoare](http://www.soundcloud.com/samanthajaynehoare)

## Evette Judge

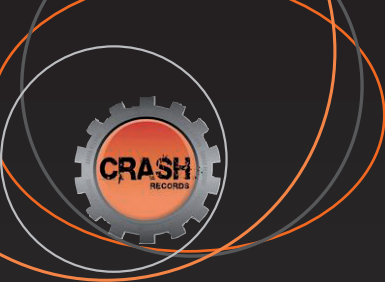
16:00 | Singer / Songwriter  
with double bass

Evette original singer/songwriter who has a couple of great albums now released, combines forces with double bass to bring a unique folksy acoustic rock music to the stage. Check out her album Strange Changes [www.evettemusic.com](http://www.evettemusic.com)

## Charlotte Dollman 16:30 | Singer / Songwriter

Brilliant singer/songwriter bringing her own slant on some great songs

**Programme may be subject to change**



# CRASH RECORDS

**PROUD SPONSORS OF MUSIC IN THE PARK**

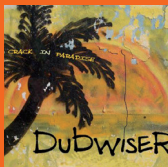
RECORD LABEL, PUBLISHERS,  
LIVE EVENTS AND PROMOTIONS,  
BOOKING AGENCY, MANAGEMENT  
AND PHOTOGRAPHY

Representing both local and national  
artists. All releases through Crash  
Records available nationwide from good  
record stores and download sites

[WWW.CRASH-RECORDS.CO.UK](http://WWW.CRASH-RECORDS.CO.UK)

[INFO@CRASH-RECORDS.CO.UK](mailto:INFO@CRASH-RECORDS.CO.UK)

AVAILABLE NOW ON CRASH RECORDS



# Crash Stage

Share your pictures and stories from today with us on Facebook



MusicInTheParkThame

## Oliver Coates

17:00 | Singer / Songwriter

Original singer/songwriter from High Wycombe who will be entertaining us with a selection of his own material as well as a few covers.

## Peter Kosanovich

17:30 | Blues / Folk

An alternative solo artist based around songwriting skills and energetic soulful live performance. Vocals/guitar and Harmonica described as a mix of Son House, Rolling Stones mixed with Bob Dylan. [www.musicbypete.co.uk](http://www.musicbypete.co.uk)

## Albion Avenue

18:00 | 3 piece acoustic

A 3 piece acoustic covers band, playing anything from rock anthems to pop classics along with sing along favourites – all given the Albion treatment

## Ruddock & Friends

18:30 |

Expect the unexpected with this duo, or it could be trio, some classic rock, something funky or it could be original.

## 2am Blue

19:00 | Original trio acoustic

The organisers of Thame First Thursday Music Club perform as a trio, giving you a blend of their own unique songwriting skills. These original songs have their own unique dimension [www.2amblue.com](http://www.2amblue.com)

## Tay O'LAY

19:30 | (John Hansen) blue funk with hand drums

John Reid Hansen who very kind runs the sound system for the Crash Stage will this year be performing with his band, listen to covers from Carlos Santana, Chuck Berry through to Jack Johnson and Queen.

**Programme may be subject to change**



# The Thame Glass Co.

*The home of windows, doors & conservatories*

*Taking your home back to the future since the 1970's*

## 40 years of **TOP GLASS** service

Of all the materials that go to make a house, none is as expressive as glass. Windows bring a building to life.

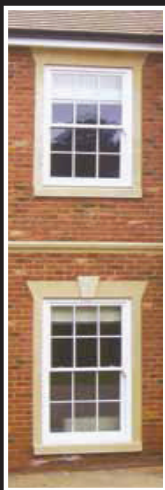
Which is why at Thame Glass, before we so much as recommend a single pane, we take a long, close look at the house. That way we can be sure that the design of the windows matches the style and feel of the property.

Over the last 40 years we have built up an unrivalled expertise in fitting windows that blend with and complement almost every kind of home, from a 16th-century cottage to a modern semi.

We ensure that as much skill and craftsmanship goes into installing our windows as it does to produce them. You'll find, too, that we take exactly the same diligent, uncompromising approach to our conservatories and doors.

Choose our products and see your home in a new light

- ✓ uPVC, aluminium and timber framed windows
- ✓ uPVC, aluminium and timber conservatories
- ✓ uPVC, aluminium and timber doors



**Thame: 01844 261177**  
**Oxford: 01865 715165**

[www.thameglass.co.uk](http://www.thameglass.co.uk) [enquiries@thameglass.co.uk](mailto:enquiries@thameglass.co.uk)



# HOURS OF FUN!



## BEN'S BUSKSTOP

In tribute to Thame's much-loved Ben Guest, we're pleased to confirm that "Ben's Buskstop" is back. This is a spot in the park, marked by a "Buskstop", where anyone who feels like it can come and entertain people with acoustic music or some other talent. We feel this will bring a smile to everyone's face, just as Ben did!

This year the Buskstop will also be the base for the Haddenham Hoofers, who will perform several times during the day and make their portable stage available to other Buskstop artists. Haddenham Hoofers perform lively group dances based on traditional Appalachian dance steps to the accompaniment of Old Time String Band Music. These dance steps originate from the mountainous Appalachian region of North America, where the communities developed energetic dance steps based on a mixture of British culture dating back to colonisation, Native American and possibly African dance movements. With these traditional steps, Hoofers choreograph their own dances using the metal shod shoes as percussive accompaniment to the live string band. These dances are performed at festivals and fetes throughout the Summer months.

Share your pictures and stories from today with us on Facebook



MusicInTheParkThame

# ASM

## AUTO RECYCLING

# CARS WANTED

### TOP PRICES PAID FOR

Scrap Cars & Vans

MOT Failures & Non-Runners

3rd Party Insurance Write-Offs

We are fully licensed by the Environment Agency  
and DVLA to process end of life vehicles and issue  
Certificates of Destruction.

**01844 268 940** (Choose  
Option 2)

*Rycote Lane, Thame OX9 2JB*

**[www.asm-autos.co.uk](http://www.asm-autos.co.uk)**





## MIX 96 MEGA SLIDE

At the top of this huge slide (4.6metres) you'll find a great view of the whole festival and a fun sliding experience for adults and kids!

## MIX 96 BUNGEE RUN

Attach the bungee cord and see how far you can get down the run before the bungee irresistibly "pings" you back.

You get three attempts and each time you get a bean bag to attach to a Velcro strip to mark how far you managed to get. The bungee run has a dual track so that two people can compete against each other! It is suitable for children aged eight and over, and adults.

There are three levels of difficulty: children's bungee, small adult and large adult.

**THERE ARE LOADS OF GREAT ACTIVITIES AT MUSIC IN THE PARK THIS YEAR!**

# KIDS GET CREATIVE!

**BASE WILL BE RUNNING ACTIVITIES  
FOR CHILDREN AGED 4 -12 IN THE  
CHILDREN'S CRAFTS TENT**



Children can be left to enjoy a range of fun activities in the capable hands of trained volunteers, allowing their parents to enjoy the music and see the rest of the attractions at their own pace.

This year the activities will have a jungle crafts theme and the children will have fun creating animal face masks and musical instruments.

Sessions are split between 4 - 8 year-olds and 9 - 12 year-olds

There are 40 places per session:

13.00-13.45

14.00-14.45

15.00-15.45

These sessions are free, although a donation would be appreciated.



# park street dental clinic

rebuilding smiles & confidence

Affordable Private Dentistry for all the Family

Friendly, Relaxing, Modern Practice

Convenient Evening and Early Morning Appointments

Visit our website for more details:

**WWW.PARKSTREETDENTAL.CO.UK**

Or call us now on:

**01844 215404**

Park Street Dental Clinic,  
34 Park Street, Thame, Oxon, OX9 3HR





# independent mortgage solutions



**01844 261249**

**[mail@ims-mortgages.com](mailto:mail@ims-mortgages.com)**

**24 Upper High Street  
Thame  
OX9 3EX**

**[www.ims-mortgages.com](http://www.ims-mortgages.com)**

# Feet First

Podiatry & Chiropody Clinic



## **Excellence for all your foot care needs**

*Health & Care Professions Council Registered*

*Treatments include:*

***Corns, Callus, Fungal infections, Verrucae, Ingrowing toenails,  
Foot pain, Gait analysis, Insole therapy etc.***

*Now offering:*

***Extracorporeal Shockwave Therapy***

*Highly effective for the treatment of:*

***Tendinopathies such as: Achilles, Tibialis Posterior, Plantar Fasciitis etc.***

*To make an appointment please telephone*

**01844 261023**

***www.feet-first.org***

***email: enquiries@feet-first.org***

**May Half Term & Summer Multisport, Football, Cricket &  
Dance courses in Thame for 4-12 year olds!**

**Rugby Dance Tri Golf Football Hockey  
Netball Orienteering Cricket Trampolining  
Ultimate Frisbee Circus Skills Dodgeball  
Boccia Handball Bench Ball Gymnastics  
Tennis Athletics Basketball Aerobics  
Rounders and much more!**

**For more info email us, call us or visit our website**

Our Ignite shop provides a great selection of Trophies, Medals, Salvers, Cup, Glass & Crystal Awards with engraving. In addition we also sell a huge range of team wear & sports equipment! Offering fantastic options for every budget.

Our products are available online or you can come and visit our shop to take a look at what we have on offer and discuss your requirements.

**68b Park Street, Thame, OX9 3HU 01844 212556**

Ignite Sport UK is the new name for Premier Sports Group & PSG Trophies.

**T: 01869 220890**  
**E: [courses@ignitesportuk.com](mailto:courses@ignitesportuk.com)**  
**[www.ignitesportuk.com](http://www.ignitesportuk.com)**



**IGNITESPORT<sup>UK</sup>**

# Eat, Drink, Shop!



## FOOD & DRINK

Callum's Hungry Tums

Coffee King

Dinky Donuts

Gourmet Farm

Henry's Hog Roast

House of Spice

Pizza Prego

Rossetti Ices

Simply Thai

The Heavenly Crepe company

The Whole Cheese Ltd

Tuddy's Jamaican Food

Velsi's Kitchen

The Cross Keys

The Falcon

## ENTERTAINMENT

Fun 4 Kidz

Barley Hill Church



## TRADE STALLS

All that Glitters

Bubblemania

Hidden Treasures

Pocket Money Toy Stall

Princes Risborough Town Festival

Ruby Moon

Thame Glass

Usborne Books

## CHARITY STALLS

Thame & District Round Table

Team C, World Challenge (LWS)

Wycombe MAG (Air Ambulance)

## JUBILEE CAFE

Girl Guiding

Lots of cakes, teas, coffees and soft drinks to refresh the whole family.



# The Falcon Pub Thame

The Falcon is a friendly traditional community pub.  
Traditional Bar Games available including  
Bar Billiards

Excellent award winning Hook Norton Ales  
and fine wines. Regular guest ales.  
Cask Marque awarded since 2007

Regular Thursday Nite Quiz 2 prizes available.  
Darts Team and home of the Red Kite  
Scooter Club.

Supporting many charities including the  
Jack O'Donnell Foundation.

**For more info contact - 01844 212118**





**XT TWO | 4.2%**

A refreshing golden ale made with English Pale and Munich Malts, combined with Bohemian and American hops to give a real international flavour.

**XT FOUR | 3.8%**

An amber beer with a special Belgian malt and a fruity mix of American and European hops. Very addictive, and XT's flagship beer.

**XT THIRTEEN | 4.5%**

Galaxy, Riwaka, Columbia and Pacific Gem Hops from all around the Pacific Ocean, meet on a raft of Amber Red Malts

**MORRELL'S VARSITY | 4.0%**

A well balanced all malt bitter which has a rich amber colour and a classic hop character that is both refreshing and satisfying.

**THAME BREWERY  
MUSICALE | 3.8%**

Made with Thame treated tap water, English malts and English hops. They don't come more local than this.

# CROSS KEYS

HOME OF THAME BREWERY

Serving an ever-changing choice of 8 cask ales, from a wide selection of independent breweries including our own



Cross Keys - 1 Park St. - Thame  
01844 218202

# Scavolini Kitchens

bestsellers in Italy for 30 years  
now available in Thame



For **all** your stone needs



[www.stoneworldkitchens.co.uk](http://www.stoneworldkitchens.co.uk)



For **all** your stone needs

The Gallery Stoneworld 43A Upper High Street  
Thame OX9 2DW

Tel: 01844 279307 Email: [sales@stoneworld.co.uk](mailto:sales@stoneworld.co.uk)

Exterior Stone sales Great Milton Tel: 01844 279274



# Get noticed!

## large format & digital printing

- INTERIOR & EXTERIOR SIGNAGE
- PULL-UP ROLLER & PVC BANNERS
- ESTATE AGENT & TRADESMEN BOARDS
- FLOOR, WINDOW & VEHICLE GRAPHICS
- 'A' FRAMES, PAVEMENT & FORECOURT SIGNS
- POP UP EXHIBITION & MODULAR DISPLAYS
- POSTERS
- AND MUCH MORE

**For more details or a quotation, contact:**

**t: 01844 260812   e: [sales@block9display.co.uk](mailto:sales@block9display.co.uk)  
[www.block9display.co.uk](http://www.block9display.co.uk)**

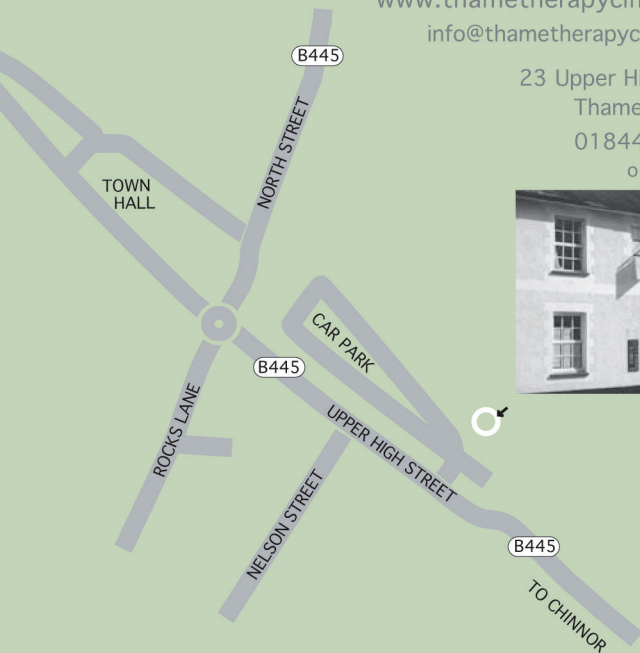
# Thame Therapy Clinic

[www.thametherapyclinic.co.uk](http://www.thametherapyclinic.co.uk)

[info@thametherapyclinic.co.uk](mailto:info@thametherapyclinic.co.uk)

23 Upper High Street  
Thame OX9 3EX

01844 261592  
or 215555



## Range of treatments we can offer you

Osteopathy • Acupuncture & Chinese Herbal Patents • Cranial Osteopathy  
• Homeopathy • Physiotherapy • Reflexology • Japanese Acupressure &  
Seitei Body Therapy • Aromatherapy Massage • Holistic Massage • Indian  
Head Massage • Hot Stone Massage • Relationship & Psychosexual  
Counselling • Speech and Language Therapy • Zero Balancing

# Thank...

## To Our Sponsors



## Generously Supported by



## Supported by



Providing child-  
rens facilities

Waitrose green  
tokens support

## Ticket Outlets

Thanks to our ticket outlets:  
Vintage & Modern Guitars  
Domesco  
Fore Golf Thame  
Cross Keys  
Falcon Pub



Thame Squadron,  
Air Training Corps





# Thanks...



Thanks to Thame Council for their ongoing support

## The Organising Committee



Organising the bands

[crash-records.co.uk](http://crash-records.co.uk)



Website, posters & programme

[icatching.co.uk](http://icatching.co.uk)

Steve Gunn & Associates  
Professional communications - from strategy to execution

Marketing and PR  
[stevegunn.co.uk](http://stevegunn.co.uk)

## Suppliers & Volunteers

A huge thank you to all those that have made this event possible, including:

Thame and District Lions Club -  
Cornerstone Church

John Hampden School

Barley Hill BASE

BucksTV

Les Liney autos & vehicle hire Ltd.

Chinnor & Thame Friends of the Earth

John Reid-Hansen



Official Photographer

All content © Thame Town Council and Friends of Elms Park.  
Programme & website design by [www.icatching.co.uk](http://www.icatching.co.uk)



## ***UNIQUE, ONE TO ONE GUITAR AND BASS TUITION!!***

***HIGHLY EXPERIENCED, ESTABLISHED, PROFESSIONAL TUTOR***

***BEGINNERS, IMPROVERS OR EXPERIENCED PLAYERS  
OF ALL AGES WELCOME***

***RELAXED, FRIENDLY APPROACH***

***BASED, FULL TIME, IN THE CENTRE OF THAME***

***COMPETITIVE, FLEXIBLE RATES***

***DAYTIME, EVENING AND WEEKEND APPOINTMENTS***

***FULLY CRB CHECKED***

***L.W.S APPROVED***

***MEMBER OF THE REGISTRY OF GUITAR TUTORS***

***WHETHER IT'S BUILDING UP AN ACOUSTIC SONG  
PORTFOLIO, MASTERING THAT ELUSIVE "SOUND", NAILING  
THAT RIFF, SOLO OR SLIDE PART, WRITING AND  
ARRANGING YOUR OWN MATERIAL OR JUST HAVING FUN  
WITH THE INSTRUMENT ..... YOU CHOOSE !!!!!!!***

***GIVE ME A CALL ON 01844 217712 TO DISCUSS HOW  
I CAN HELP YOU PLAY THE WAY YOU WANT TO***

***KEV LUCAS***



**Save up to  
50%  
when you  
book online**

**Go to [www.zenhairthame.co.uk](http://www.zenhairthame.co.uk)  
and click on "Promotions" for  
more details.**

**Making cuts so you don't have to**

**1 Upper High St, Thame, Oxfordshire OX9 3ER**

**Tel: 01844 215052**